

Office Space for Lease | Rent From \$10 PSF + Expenses
14401 E 42nd Street Bldgs 2-4 Independence, MO 64055



Building 2 | Suite 100 | 2,283 SF Office
Building 4 | Suite 200 | 1,361 SF Office

Tenant Responsible for Gas, Electric, Internet, Insurance, & Security

For more information, or to schedule a tour, please call David Gunter.

Josh Haith
Josh@Haith.com
O: (913) 888-3456 x 7
www.Haith.com



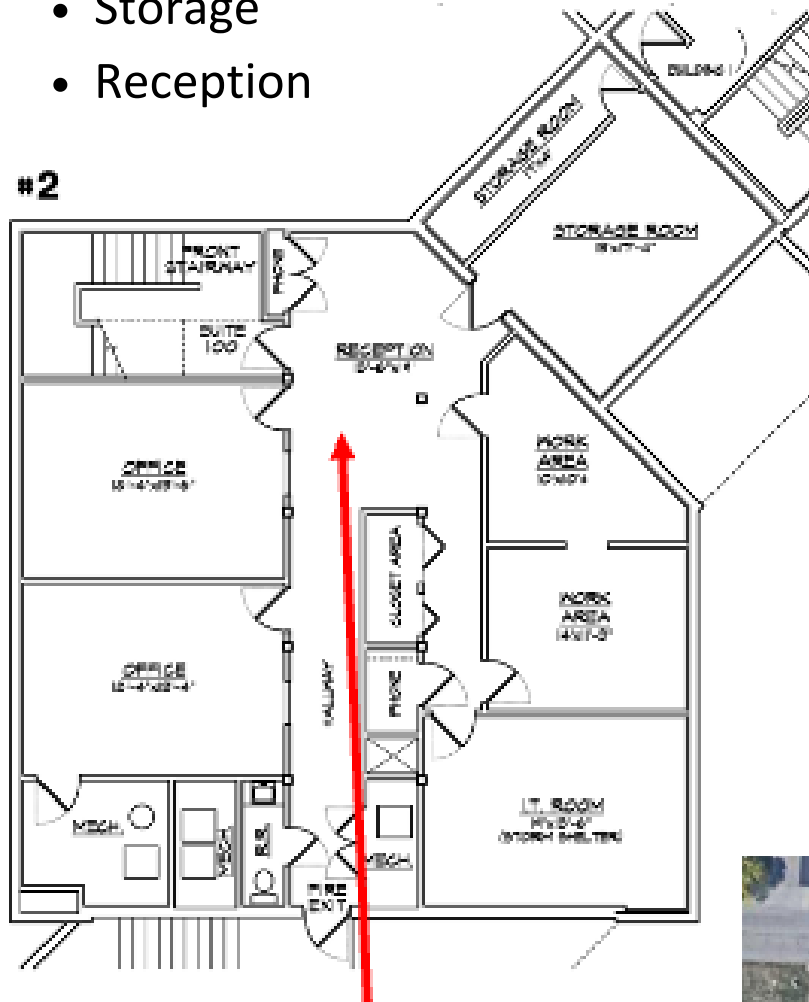
David Gunter
DGunter@Haith.com
O: (913) 888-3456 x 8
M: (913) 265-8029

Office Space for Lease | \$10 PSF + Expenses

14401 E 42nd Street Bldgs 2-4 Independence, MO 64055

\$10.00 PSF Base Rent = \$1,902.50 Per Month + Expenses

- 5 Private Offices
- Storage
- Reception

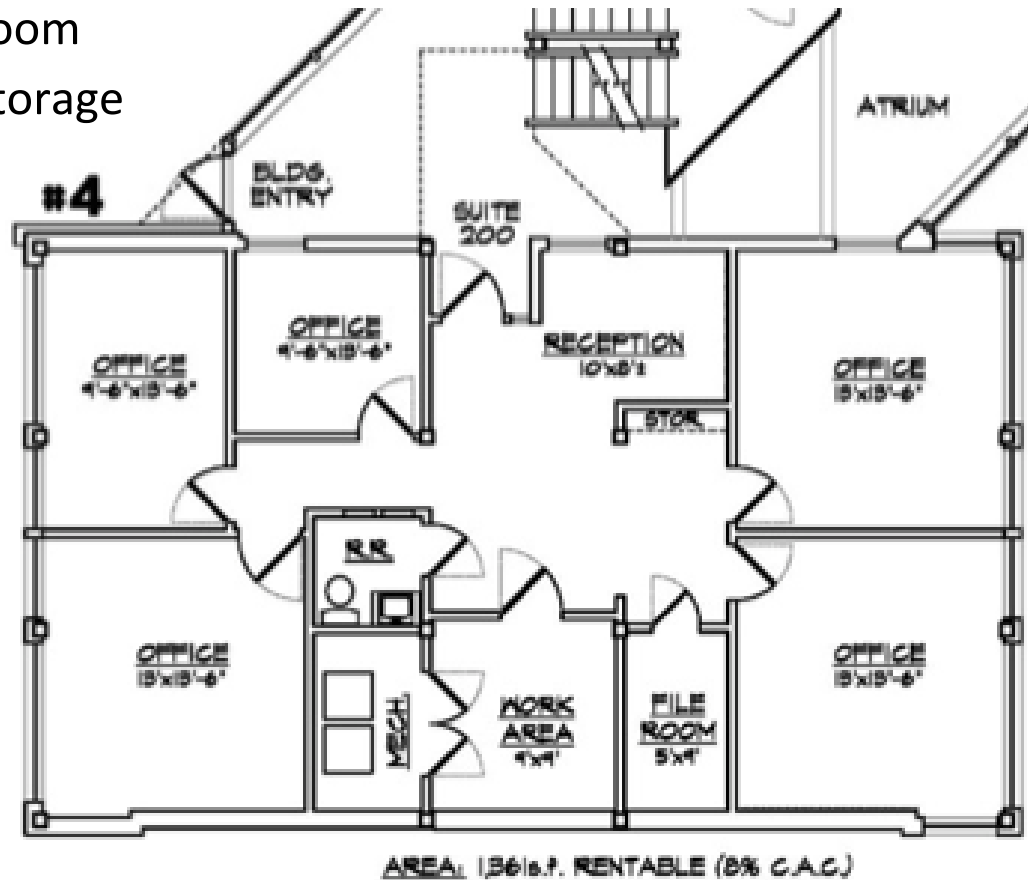


Office Space for Lease | \$14.50 PSF + Expenses

14401 E 42nd Street Building 4 Suite 200 | 1,361 SF

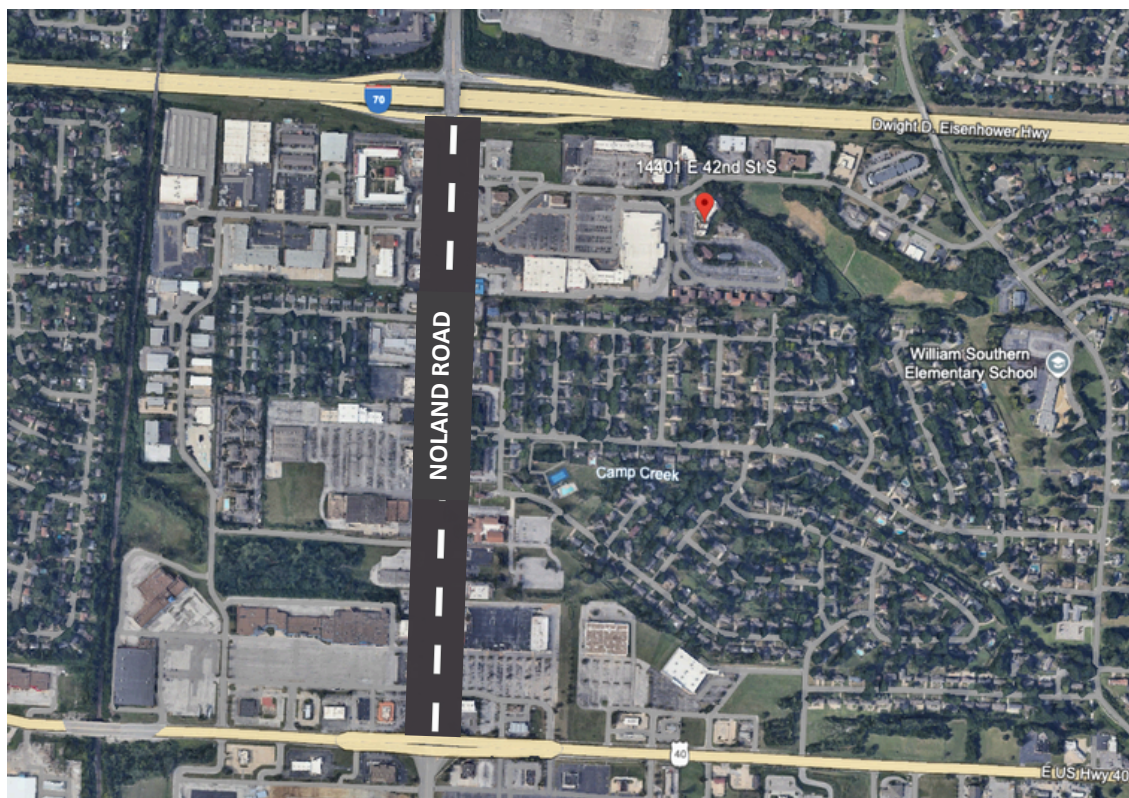
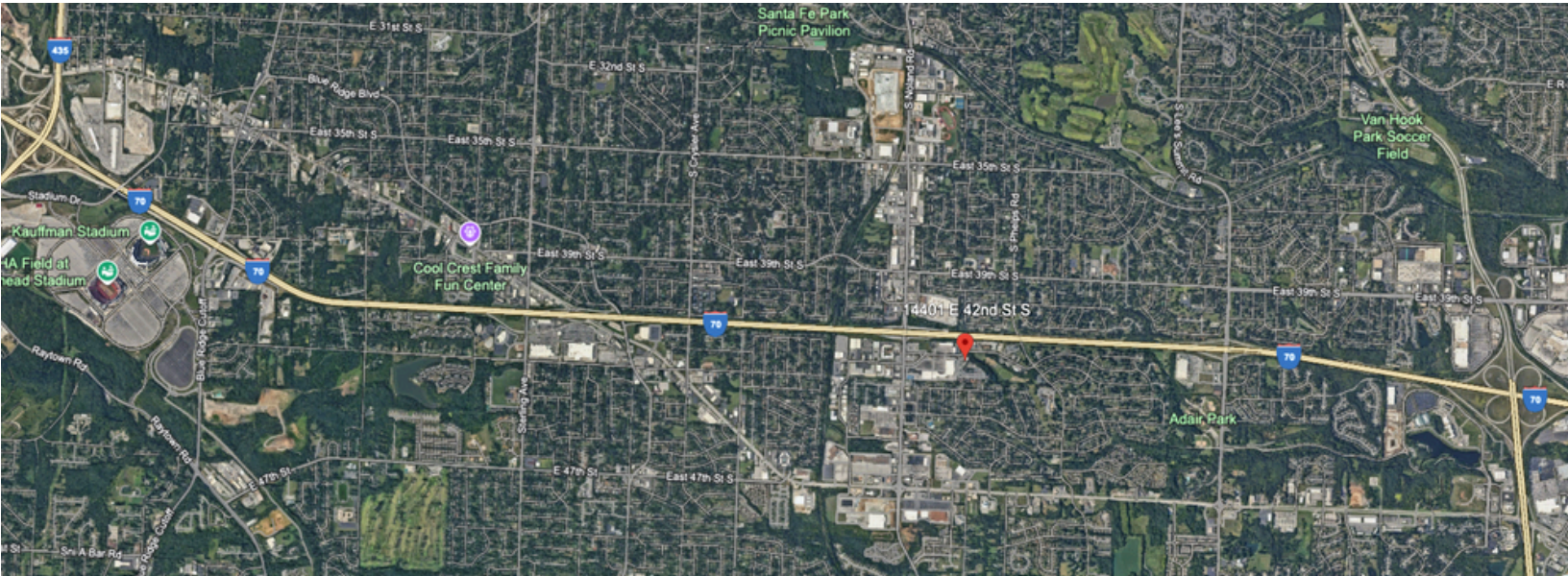
\$14.50 PSF Base Rent = \$1,650 Per Month + Expenses

- Reception
- Private Offices On Glass
- Private Restroom
- Designated Storage



Office Space for Lease | Rent From \$10 PSF + Expenses

14401 E 42nd Street Bldgs 2-4 Independence, MO 64055



Excellent Location Off of I-70 in Between I-435 & I-470
Access via I-70 & Noland Road
Independence Office Leasing Has Been Strong in 2024